



DISTRIBUTED BY:

SHENGTAI GROUP  
ADD:XISHUI INDUSTRIAL AREA DONGYING SHANDONG CHINA  
TEL:+0086-400-600-3131  
FAX:+86-546-6506227  
[Http://www.shengtaigroup.com](http://www.shengtaigroup.com)



**SHENGTAI**  
**AOTELI**

**SHENGTAI GROUP CO.,LTD**

**MARKET ORIENTED TAKING  
CLIENTS AS GOD  
SEEKING SURVIVAL ON QUALITY  
AIMING AT WIN-WIN SITUATION**

## **Company Profile>>**

Shengtai Group, established in 2002, (with its predecessor started from 1987) locates at the 1st China Tyres Village, holding the largest tyre manufacturing base at Xishui, Guangrao County, Shandong Province. Through 30 years development, We have become an enterprise group engaging in the fields of tyres, bead wire and black carbon production, aircraft repair, maintenance & dismantling, television & culture industry park and pension industry.

For now we have 3 million capacity TBR tyres and 6 million passenger tyres production capacity. From 2013 we started building a new factory, this factory will have passenger tyre, UHP, LTR, SUV, and commercial van ranges under 12 million annually capacity and another 1.2 million annually TBR tyres, the first stage of this factory will be finished in Oct. 2014.

Our Three-A brand is the 1st China Famous Brand of Tyre Industry in Dongying City, our products have the following certificates like DOT, ECE, INMETRO, GCC, REACH, CCC, ISO 16949, OHSAS18001 and we have high level tyres labeling for Europe. Besides satisfying the domestic demanding, our products has been extended to more than 90 countries and areas, such as North America, Latin America, Europe, Africa and Middle East and also we are strong in South East Asia.

In the future, Shengtai group will concentrate more on products quality, striving to take the lead in tyre industry!

## Qualifications>>



**Shengtai group's PCR technology originates from European world leading technology>>**



All Hydraulic Tire Curing Press



Bartel Bead Wire Extrusion and Assembly Machine (America)



Tire Uniformity Test Machine (Japan)



VMI Body Ply Cutter (Holland)



## Pattern Characteristics



■ **Horn-like silent grooves on main ribs**  
Same groove void ratio at any tire cross section for smooth air flow to effectively reduce pattern noise. It connects the central grooves as silencer.



■ **Special shoulder block design**  
The special design with sipes at the shoulder block effectively reduces the shoulder heat generation and resonance during tire rolling.



■ **Silent pitch arrangement**  
Silent driving experience is achieved by optimized pitch width and arrangement, pitch displacement design to reduce tire harmonic noise.



■ **4 wide longitude grooves**  
4 wide longitudinal grooves to enhance water evacuation on wet roads, prevent side slips and improve traction by well-designed angle.



■ **Streamline transversal grooves**  
Superior water evacuation ability with full cover of streamline transversal grooves to ensure good wet traction for better steering and high speed stability.



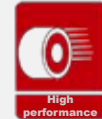
■ **Anti-uneven-wear shoulder strip**  
2 anti-uneven-wear strips at the shoulder in order to stabilize tire profile and ensure sufficient shoulder support and stability at high speed cornering.

## P307 Tire Line

SIZE	LOAD INDEX	SPEED RANGE	APPROVED RIM	STANDARD RIM	SECTION WIDTH mm	OD mm	MAX. LOAD		MAX. PRESSURE		TREAD DEPTH mm
							Kg	LBS	Kpa	P.S.I	
155/65R13	73	T	4.5-5.5	4.5	157	532	365	805	300	44	7.4
165/65R13	77	T	4.5-6.0	5.0	170	544	412	908	300	44	7.4
165/70R13	79	T	4.0-5.5	5.0	170	562	437	963	300	44	7.4
165/70R13	83 XL	T	4.0-5.5	5.0	170	562	487	1074	340	49	7.4
175/65R13	80	T	5.0-6.0	5.0	177	558	450	992	300	44	7.4
175/70R13	82	T	4.5-6.0	5.0	177	576	475	1047	300	44	7.4
165/60R14	75	T/H	4.5-6.0	5.0	170	554	387	853	300	44	7.4
165/70R14	81	T	4.0-5.5	5.0	170	588	462	1019	300	44	7.4
175/65R14	82	T/H	5.0-6.0	5.0	177	584	475	1047	300	44	7.6
175/65R14	86 XL	T/H	5.0-6.0	5.0	177	584	530	1168	340	49	7.6
175/70R14	84	T/H	4.5-6.0	5.0	177	602	500	1102	300	44	7.4
185/60R14	82	H/V	5.0-6.5	5.5	189	578	475	1047	300	44	7.6
185/60R14	86 XL	H/V	5.0-6.5	5.5	189	578	530	1168	340	49	7.6
185/65R14	86	T/H	5.0-6.5	5.5	189	596	530	1168	300	44	7.6
185/65R14	90 XL	T/H	5.0-6.5	5.5	189	596	600	1323	340	49	7.6
185/70R14	88	T/H	4.5-6.0	5.5	189	616	560	1235	300	44	7.6
185/70R14	92 XL	T/H	4.5-6.0	5.5	189	616	630	1389	340	49	7.6
195/60R14	86	H/V	5.5-7.0	6.0	201	590	530	1168	300	44	7.8
195/70R14	91	T/H	5.0-6.5	6.0	201	630	615	1356	300	44	7.8
195/70R14	95 XL	T/H	5.0-6.5	6.0	201	630	690	1521	340	49	7.8
205/70R14	95	T	5.0-7.0	6.0	209	644	690	1521	300	44	7.6
205/70R14	98 XL	T	5.0-7.0	6.0	209	644	750	1653	340	49	7.6
175/65R15	84	T/H	5.0-6.0	5.0	177	609	500	1102	300	44	7.6
185/55R15	82	H/V	5.0-6.5	6.0	194	585	475	1047	300	44	7.6
185/60R15	84	H	5.0-6.5	5.5	189	603	500	1102	300	44	7.6
185/60R15	88 XL	H	5.0-6.5	5.5	189	603	560	1235	340	49	7.6



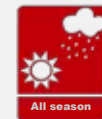
Low noise emission and low impact noise and vibration when rolling over obstacles



Excellent wear and steering performances



Symmetric tread pattern design for good straight line high speed stability



Provide good traction and braking at all weather conditions (sunny, raining, summer, winter)



## Pattern Characteristics



■ **Horn-like silent grooves on main ribs**  
Same groove void ratio at any tire cross section for smooth air flow to effectively reduce pattern noise. It connects the central grooves as silencer.



■ **Special shoulder block design**  
The special design with sipes at the shoulder block effectively reduces the shoulder heat generation and resonance during tire rolling.



■ **Silent pitch arrangement**  
Silent driving experience is achieved by optimized pitch width and arrangement, pitch displacement design to reduce tire harmonic noise.



■ **4 wide longitude grooves**  
4 wide longitudinal grooves to enhance water evacuation on wet roads, prevent side slips and improve traction by well-designed angle.



■ **Streamline transversal grooves**  
Superior water evacuation ability with full cover of streamline transversal grooves to ensure good wet traction for better steering and high speed stability.



■ **Anti-uneven-wear shoulder strip**  
2 anti-uneven-wear strips at the shoulder in order to stabilize tire profile and ensure sufficient shoulder support and stability at high speed cornering.

## P307 Tire Line

SIZE	LOAD INDEX	SPEED RANGE	APPROVED RIM	STANDARD RIM	SECTION WIDTH mm	OD mm	MAX. LOAD		MAX. PRESSURE		TREAD DEPTH mm
							Kg	LBS	Kpa	P.S.I	
185/65R15	88	T/H	5.0~6.5	5.5	189	621	560	1235	300	44	7.6
185/65R15	92 XL	T/H	5.0~6.5	5.5	189	621	630	1389	340	49	7.6
195/60R15	88	H/V	5.5~7.0	6.0	201	615	560	1235	300	44	7.8
195/65R15	91	H/V	5.5~7.0	6.0	201	635	615	1356	300	44	7.8
195/65R15	95 XL	H/V	5.5~7.0	6.0	201	635	690	1521	340	49	7.8
205/60R15	91	H/V	5.5~7.5	6.0	209	627	615	1356	300	44	7.8
205/60R15	95 XL	H/V	5.5~7.5	6.0	209	627	690	1521	340	49	7.8
205/65R15	94	H/V	5.5~7.5	6.0	209	647	670	1477	300	44	7.8
205/65R15	99 XL	H/V	5.5~7.5	6.0	209	647	775	1709	340	49	7.8
205/70R15	96	T/H	5.0~7.0	6.0	209	669	710	1565	300	44	7.8
215/65R15	96	H/V	6.0~7.5	6.5	221	661	710	1565	300	44	7.8
215/70R15	98	T/H	5.5~7.0	6.5	221	683	750	1653	300	44	7.8
195/60R16	89	H	5.5~7.0	6.0	201	640	580	1279	300	44	7.8
205/55R16	91	H/V/W	5.5~7.5	6.5	214	632	615	1356	300	44	7.8
205/55R16	94 XL	H/V/W	5.5~7.5	6.5	214	632	670	1477	340	49	7.8
205/60R16	92	H/V	5.5~7.5	6.0	209	652	630	1389	300	44	7.8
205/60R16	96 XL	H/V	5.5~7.5	6.0	209	652	710	1565	340	49	7.8
205/65R16	99 XL	H	5.5~7.5	6.0	209	672	775	1709	340	49	7.8
215/60R16	95	H/V	6.0~7.5	6.5	221	664	690	1521	300	44	8.1
215/60R16	99 XL	H/V	6.0~7.5	6.5	221	664	775	1709	340	49	8.1
225/50R16	92	H/V/W	6.0~8.0	7.0	233	632	630	1389	300	44	7.8
225/50R16	96 XL	H/V/W	6.0~8.0	7.0	233	632	710	1565	340	49	7.8
225/60R16	98	H/V	6.0~8.0	6.5	228	676	750	1653	300	44	8.1
225/60R16	102 XL	H/V	6.0~8.0	6.5	228	676	850	1874	340	49	8.1



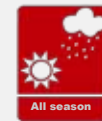
**Comfort**  
Low noise emission and low impact noise and vibration when rolling over obstacles



**High performance**  
Excellent wear and steering performances



**Symmetric pattern**  
Symmetric tread pattern design for good straight line high speed stability



**All season**  
Provide good traction and braking at all weather conditions (sunny, raining, summer, winter)



## Pattern Characteristics



### ■ Horn-like silent grooves on main ribs

Same groove void ratio at any tire cross section for smooth air flow to effectively reduce pattern noise. It connects the central grooves as silencer.



### ■ Special shoulder block design

The special design with sipes at the shoulder block effectively reduces the shoulder heat generation and resonance during tire rolling.



### ■ Silent pitch arrangement

Silent driving experience is achieved by optimized pitch width and arrangement, pitch displacement design to reduce tire harmonic noise.



### ■ 4 wide longitude grooves

4 wide longitudinal grooves to enhance water evacuation on wet roads, prevent side slips and improve traction by well-designed angle.



### ■ Streamline transversal grooves

Superior water evacuation ability with full cover of streamline transversal grooves to ensure good wet traction for better steering and high speed stability.



### ■ Anti-uneven-wear shoulder strip

2 anti-uneven-wear strips at the shoulder in order to stabilize tire profile and ensure sufficient shoulder support and stability at high speed cornering.

## P607 Tire Line

SIZE	LOAD INDEX	SPEED RANGE	APPROVED RIM	STANDARD RIM	SECTION WIDTH mm	OD mm	MAX. LOAD		MAX. PRESSURE		TREAD DEPTH mm
							Kg	LBS	Kpa	P.S.I	
195/50R15	82	H/V	5.5~7.0	6.0	201	577	475	1047	300	44	7.8
195/50R15	86 XL	H/V	5.5~7.0	6.0	201	577	530	1168	340	49	7.8
195/55R15	85	H/V	5.5~7.0	6.0	201	595	515	1135	300	44	7.8
195/55R15	89 XL	H/V	5.5~7.0	6.0	201	595	580	1279	340	49	7.8
205/50R16	87	H/V/W	5.5~7.5	6.5	214	612	545	1201	300	44	7.8
205/50R16	91 XL	H/V/W	5.5~7.5	6.5	214	612	615	1356	340	49	7.8
205/55R16	91	H/V/W	5.5~7.5	6.5	214	632	615	1356	300	44	7.8
205/55R16	94 XL	H/V/W	5.5~7.5	6.5	214	632	670	1477	340	49	7.8
215/55R16	93	H/V/W	6.0~7.5	7.0	226	642	650	1433	300	44	7.8
215/55R16	97 XL	H/V/W	6.0~7.5	7.0	226	642	730	1609	340	49	7.8
225/50R16	92	H/V/W	6.0~8.0	7.0	233	632	630	1389	300	44	7.8
225/50R16	96 XL	H/V/W	6.0~8.0	7.0	233	632	710	1565	340	49	7.8
225/55R16	95	H/V	6.0~8.0	7.0	233	654	690	1521	300	44	7.8
225/55R16	99 XL	H/V	6.0~8.0	7.0	233	654	775	1709	340	49	7.8
205/40R17	80	V/W	7.0~8.0	7.5	212	596	450	992	300	44	7.8
205/40R17	84 XL	V/W	7.0~8.0	7.5	212	596	500	1102	340	49	7.8
205/45R17	84	V/W	6.5~7.5	7.0	206	616	500	1102	300	44	7.8
205/45R17	88 XL	V/W	6.5~7.5	7.0	206	616	560	1235	340	49	7.8
205/50R17	89	H/V/W	5.5~7.5	6.5	214	638	580	1279	300	44	7.8
205/50R17	93 XL	H/V/W	5.5~7.5	6.5	214	638	650	1433	340	49	7.8
215/40R17	83	V/W	7.5~9.0	7.5	218	604	487	1074	300	44	7.8
215/40R17	87XL	V/W	7.5~9.0	7.5	218	604	545	1201	340	49	7.8
215/45R17	87	V/W	7.0~8.0	7.0	213	626	545	1201	300	44	7.8
215/45R17	91 XL	V/W	7.0~8.0	7.0	213	626	615	1356	340	49	7.8
215/50R17	95 XL	V/W	6.0~7.5	7.0	226	648	690	1521	340	49	7.8
215/55R17	98 XL	W	6.0~7.5	7.0	226	668	750	1653	340	49	7.8
225/45R17	91	V/W	7.0~8.5	7.5	225	634	615	1356	300	44	7.8
225/45R17	94 XL	V/W	7.0~8.5	7.5	225	634	670	1477	340	49	7.8
225/50R17	98 XL	W	6.0~8.0	7.0	233	658	750	1653	340	49	7.8
225/55R17	97	V/W	6.0~8.0	7.0	233	680	730	1609	300	44	7.8
225/55R17	101 XL	V/W	6.0~8.0	7.0	233	680	825	1819	340	49	7.8
235/45R17	94	V/W	7.5~9.0	8.0	236	644	670	1477	300	44	7.8
235/45R17	97 XL	V/W	7.5~9.0	8.0	236	644	730	1609	340	49	7.8


**Comfort**

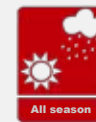
Low noise emission and low impact noise and vibration when rolling over obstacles


**High performance**

Excellent wear and steering performances


**Symmetric pattern**

Symmetric tread pattern design for good straight line high speed stability


**All season**

Provide good traction and braking at all weather conditions (sunny, raining, summer, winter)



## Pattern Characteristics



■ **Horn-like silent grooves on main ribs**  
Same groove void ratio at any tire cross section for smooth air flow to effectively reduce pattern noise. It connects the central grooves as silencer.



■ **Special shoulder block design**  
The special design with sipes at the shoulder block effectively reduces the shoulder heat generation and resonance during tire rolling.



■ **Silent pitch arrangement**  
Silent driving experience is achieved by optimized pitch width and arrangement, pitch displacement design to reduce tire harmonic noise.



■ **4 wide longitude grooves**  
4 wide longitudinal grooves to enhance water evacuation on wet roads, prevent side slips and improve traction by well-designed angle.



■ **Streamline transversal grooves**  
Superior water evacuation ability with full cover of streamline transversal grooves to ensure good wet traction for better steering and high speed stability.



■ **Anti-uneven-wear shoulder strip**  
2 anti-uneven-wear strips at the shoulder in order to stabilize tire profile and ensure sufficient shoulder support and stability at high speed cornering.

## P607 Tire Line

SIZE	LOAD INDEX	SPEED RANGE	APPROVED RIM	STANDARD RIM	SECTION WIDTH mm	OD mm	MAX. LOAD		MAX. PRESSURE		TREAD DEPTH mm
							Kg	LBS	Kpa	P.S.I	
235/55R17	99	V/W	6.5-8.5	7.5	245	690	775	1709	300	44	7.8
235/55R17	103 XL	V/W	6.5-8.5	7.5	245	690	875	1929	340	49	7.8
245/40R17	95 XL	W	8.0-9.5	8.5	248	628	690	1521	340	49	7.8
245/45R17	99 XL	W	7.5-9.0	8.0	243	652	775	1709	340	49	7.8
215/35R18	80	V/W	7.5-8.5	7.5	218	607	450	992	300	44	7.8
215/35R18	84 XL	V/W	7.5-8.5	7.5	218	607	500	1102	340	49	7.8
225/40R18	88	V/W	7.5-9.0	8.0	230	637	560	1235	300	44	7.8
225/40R18	92 XL	V/W	7.5-9.0	8.0	230	637	630	1389	340	49	7.8
225/45R18	95 XL	W	7.0-8.5	7.5	225	659	690	1521	340	49	7.8
235/40R18	91	V/W	8.0-9.5	8.5	241	645	615	1356	300	44	7.8
235/40R18	95 XL	V/W	8.0-9.5	8.5	241	645	690	1521	340	49	7.8
245/40R18	97 XL	Y	8.0-9.5	8.5	248	653	730	1609	340	49	7.8
245/45R18	100 XL	W	7.5-9.0	8.0	243	677	800	1764	340	49	7.8
255/35R18	94 XL	W	8.5-10.0	9.0	260	635	670	1477	340	49	7.8
255/45R18	103 XL	W	8.0-9.5	8.5	255	687	875	1929	340	49	7.8
225/35R19	84	V/W	7.5-9.0	8.0	230	641	500	1102	300	44	7.8
225/35R19	88 XL	V/W	7.5-9.0	8.0	230	641	560	1235	340	49	7.8
235/35R19	87	V/W	8.0-9.5	8.5	241	647	545	1201	300	44	7.8
235/35R19	91 XL	V/W	8.0-9.5	8.5	241	647	615	1356	340	49	7.8
245/35R19	89	V/W	8.0-9.5	8.5	248	655	580	1279	300	44	7.8
245/35R19	93 XL	V/W	8.0-9.5	8.5	248	655	650	1433	340	49	7.8
265/30R19	93 XL	W	9.0-10.0	9.5	271	643	650	1433	340	49	7.8
275/30R19	96 XL	W	9.0-10.0	9.5	278	649	710	1565	340	49	7.8
225/35R20	90 XL	V/W	7.5-9.0	8.0	230	666	600	1323	340	49	7.8
255/35R20	97 XL	W	8.5-10.0	9.0	260	686	730	1609	340	49	7.8
275/45R20	106	H/V	8.5-10.5	9.0	273	756	950	2094	300	44	8.8
275/45R20	110 XL	H/V	8.5-10.5	9.0	273	756	1060	2337	340	49	8.8
275/55R20	117 XL	W	7.5-9.5	8.5	284	810	1285	2833	340	49	7.8
285/50R20	112	H/V	8.0-10.0	9.0	297	794	1120	2469	300	44	8.8
285/50R20	116 XL	H/V	8.0-10.0	9.0	297	794	1250	2756	340	49	8.8
305/35R24	112 XL	W	10.0-12.0	11.0	313	824	1120	2469	340	49	7.8



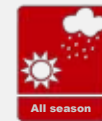
Low noise emission and low impact noise and vibration when rolling over obstacles



Excellent wear and steering performances



Symmetric tread pattern design for good straight line high speed stability



Provide good traction and braking at all weather conditions (sunny, raining, summer, winter)



## Pattern Characteristics



■ **Shoulder rib to suppress uneven wear**



■ **Center rib to improve straight line stability**



■ **Variable pitch arrangement to reduce road noise**



■ **Special bead design for good endurance and increase tire life**



■ **Open groove at shoulder to enhance cooling**

## ECOSAVER Tire Line

SIZE	LOAD INDEX	SPEED RANGE	APPROVED RIM	STANDARD RIM	SECTION WIDTH mm	OD mm	MAX. LOAD		MAX. PRESSURE		TREAD DEPTH mm
							Kg	LBS	Kpa	P.S.I	
215/70R15	98	T/H	5.5~7.0	6.5	221	683	750	1653	300	44	8.7
215/75R15	100	H	5.5~7.0	6.0	216	703	800	1764	300	44	8.7
225/70R15	100	H	6.0~7.5	6.5	228	697	800	1764	300	44	8.7
225/75R15	102	H	6.0~7.5	6.0	223	719	850	1874	300	44	8.7
235/75R15	105	H	6.0~8.0	6.5	235	733	925	2039	300	44	8.7
265/70R15	110	H	7.0~9.0	8.0	272	753	1060	2337	300	44	9.7
265/70R15	112	T/H	7.0~9.0	8.0	272	753	1120	2469	300	44	9.7
215/60R16	95	T/H	6.0~7.5	6.5	221	664	690	1521	300	44	8.7
215/60R16	99 XL	T/H	6.0~7.5	6.5	221	664	775	1709	340	49	8.7
215/65R16	98	T/H	6.0~7.5	6.5	221	686	750	1653	300	44	8.7
215/65R16	102 XL	T/H	6.0~7.5	6.5	221	686	850	1874	340	49	8.7
215/70R16	100	H	5.5~7.0	6.5	221	708	800	1764	300	44	8.7
225/60R16	98	H	6.0~8.0	6.5	228	676	750	1653	300	44	8.2
225/65R16	100	H	6.0~8.0	6.5	228	698	800	1764	300	44	8.5
225/70R16	102	T	6.0~7.5	6.5	228	722	850	1874	300	44	8.7
235/60R16	100	T/H	6.5~8.5	7.0	240	688	800	1764	300	44	9.2
235/60R16	104 XL	T/H	6.5~8.5	7.0	240	688	900	1984	340	49	9.2
235/65R16	103	T	6.5~8.5	7.0	240	712	875	1929	300	44	9.2
235/70R16	106	T/H	6.0~8.0	7.0	240	736	950	2094	300	44	9.2
235/70R16	109 XL	T/H	6.0~8.0	7.0	240	736	1030	2271	340	49	9.2
245/70R16	107	T/H	6.5~8.0	7.0	248	750	975	2149	300	44	9.2
245/70R16	111 XL	T/H	6.5~8.0	7.0	248	750	1090	2403	340	49	9.2
245/75R16	111	H	6.5~8.0	7.0	248	774	1090	2403	300	44	8.7
255/65R16	109	T/H	7.0~9.0	7.5	260	738	1030	2271	300	44	9.2
255/70R16	111	T	6.5~8.5	7.5	260	764	1090	2403	300	44	9.2
265/70R16	112	T/H	7.0~9.0	8.0	272	778	1120	2469	300	44	9.7
265/75R16	116	H	7.0~9.0	7.5	267	804	1250	2756	300	44	8.7
275/70R16	114	T/H	7.0~9.0	8.0	279	792	1180	2601	300	44	9.7
215/60R17	96	T/H	6.0~7.5	6.5	221	690	710	1565	300	44	8.7
215/60R17	100 XL	T/H	6.0~7.5	6.5	221	690	800	1764	340	49	8.7
225/60R17	99	T/H	6.0~8.0	6.5	228	702	775	1709	300	44	8.7



**Comfort**

Low noise emission and low impact noise and vibration when rolling over obstacles



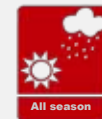
**High performance**

Excellent wear and steering performances



**Symmetric pattern**

Symmetric tread pattern design for good straight line high speed stability



**All season**

Provide good traction and braking at all weather conditions (sunny, raining, summer, winter)





## Pattern Characteristics



■ **Shoulder rib to suppress uneven wear**



■ **Center rib to improve straight line stability**



■ **Variable pitch arrangement to reduce road noise**



■ **Special bead design for good endurance and increase tire life**



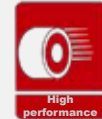
■ **Open groove at shoulder to enhance cooling**

## ECOSAVER Tire Line

SIZE	LOAD INDEX	SPEED RANGE	APPROVED RIM	STANDARD RIM	SECTION WIDTH mm	OD mm	MAX. LOAD		MAX. PRESSURE		TREAD DEPTH mm
							Kg	LBS	Kpa	P.S.I	
225/60R17	103 XL	T/H	6.0~8.0	6.5	228	702	875	1929	340	49	8.7
225/65R17	102	T/H	6.0~8.0	6.5	228	724	850	1874	300	44	8.7
225/65R17	106 XL	T/H	6.0~8.0	6.5	228	724	950	2094	340	49	8.7
225/70R17	108 XL	T	6.0~7.5	6.5	228	748	1000	2205	340	49	8.7
235/65R17	104	T/H	6.5~8.5	7.0	240	738	900	1984	300	44	9.2
235/65R17	108 XL	T/H	6.5~8.5	7.0	240	738	1000	2205	340	49	9.2
235/70R17	107	T/H	6.0~8.0	7.0	240	762	975	2149	300	44	9.2
235/70R17	111 XL	T/H	6.0~8.0	7.0	240	762	1090	2403	340	49	9.2
245/65R17	107	T/H	7.0~8.5	7.0	248	750	975	2149	300	44	9.2
245/65R17	111 XL	T/H	7.0~8.5	7.0	248	750	1090	2403	340	49	9.2
245/70R17	108	T	6.5~8.0	7.0	248	776	1000	2205	300	44	9.2
255/65R17	110	T/H	7.0~9.0	7.5	260	764	1060	2337	300	44	9.2
255/65R17	114 XL	T/H	7.0~9.0	7.5	260	764	1180	2601	340	49	9.2
255/70R17	110	T	6.5~8.5	7.5	260	790	1060	2337	300	44	9.2
255/70R17	112	T	6.5~8.5	7.5	260	790	1120	2469	300	44	9.2
265/65R17	112	T/H	7.5~9.5	8.0	272	776	1120	2469	300	44	9.7
265/65R17	116 XL	T/H	7.5~9.5	8.0	272	776	1250	2756	340	49	9.7
265/70R17	113	H	7.0~9.0	8.0	272	804	1150	2535	300	44	9.7
265/70R17	115	T/H	7.0~9.0	8.0	272	804	1215	2679	300	44	9.7
275/60R17	110	T/H	7.5~9.5	8.0	279	762	1060	2337	300	44	9.7
275/65R17	115	T/H	7.5~9.5	8.0	279	790	1215	2679	300	44	9.7
275/65R17	119 XL	T/H	7.5~9.5	8.0	279	790	1360	2998	340	49	9.7
285/65R17	116	T/H	8.0~10.0	8.5	292	802	1250	2756	300	44	9.7
225/60R18	100	H	6.0~8.0	6.5	228	727	800	1764	300	44	8.2
235/60R18	103	H	6.5~8.5	7.0	240	739	875	1929	300	44	8.2
245/60R18	104	H	7.0~8.5	7.0	248	751	900	1984	300	44	8.2
265/60R18	110	H/V	7.5~9.5	8.0	272	775	1060	2337	300	44	8.2
285/60R18	120 XL	H/V	8.0~10.0	8.5	292	799	1400	3086	340	49	8.2
255/70R18	112	H	6.5~8.5	7.5	260	815	1120	2469	300	44	8.7



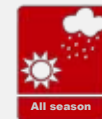
Low noise emission and low impact noise and vibration when rolling over obstacles



Excellent wear and steering performances



Symmetric tread pattern design for good straight line high speed stability



Provide good traction and braking at all weather conditions (sunny, raining, summer, winter)



## Pattern Characteristics



### ■ Inner pattern

The opening bevel groove ensures effective water evacuation against hydroplaning



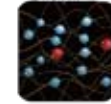
### ■ Outer pattern

The strong longitude rib and block enhance the snow grip performance dramatically



### ■ 3D Sipe

The high density 3D sipes on the tread pattern ensures the general rigidity of the tread and good performance of grip ability and handling.



### ■ Silica tread compound

The unique silica compound of winter tire enhances the softness and anti-wear performance, ensures good handling and brake performance.

## ECOSNOW Tire Line

SIZE	LOAD INDEX	SPEED RANGE	APPROVED RIM	STANDARD RIM	SECTION WIDTH mm	OD mm	MAX. LOAD		MAX. PRESSURE		TREAD DEPTH mm
							Kg	LBS	Kpa	P.S.I	
175/65R14	82	T/H	5.0~6.0	5.0	177	584	475	1047	300	44	8.3
195/65R15	91	T/H	5.5~7.0	6.0	201	635	615	1356	300	44	8.3
205/65R15	94	T/H	5.5~7.5	6.0	209	647	670	1477	300	44	8.3
205/55R16	91	T/H	5.5~7.5	6.5	214	632	615	1356	300	44	8.3
185/60R14	82	T/H	5.0~6.5	5.5	189	578	475	1047	300	44	8.3
185/65R14	86	T/H	5.0~6.5	5.5	189	596	530	1168	300	44	8.3
185/65R15	88	T/H	5.0~6.5	5.5	189	621	560	1235	300	44	8.3
195/60R15	88	T/H	5.5~7.0	6.0	201	615	560	1235	300	44	8.3
205/60R16	96 XL	H	5.5~7.5	6.0	209	652	710	1565	340	49	8.3
215/60R16	99 XL	H	6.0~7.5	6.5	221	664	775	1709	340	49	8.3
215/55R16	97 XL	H/V	6.0~7.5	7.0	226	642	730	1609	340	49	8.3
225/55R16	99 XL	H/V	6.0~8.0	7.0	233	654	775	1709	340	49	8.3
195/55R15	85	H	5.5~7.0	6.0	201	595	515	1135	300	44	8.3
215/65R16	98	T/H	6.0~7.5	6.5	221	686	750	1653	300	44	8.3
225/45R17	94 XL	H/V	7.0~8.5	7.5	225	634	670	1477	340	49	8.3
225/40R18	92 XL	H/V	7.5~9.0	8.0	230	637	630	1389	340	49	8.3
245/45R18	100 XL	H/V	7.5~9.0	8.0	243	677	800	1764	340	49	8.3
255/55R18	109 XL	H/V	7.0~9.0	8.0	265	737	1030	2271	340	49	8.3



Low noise emission and low impact noise and vibration when rolling over obstacles



Excellent handling on ice-snow road



Excellent cornering performance



Good traction and grip ability in the cold winter



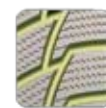
## ECOSNOW4x4 Tire Line

### Pattern Characteristics



■ **Central V strengthen rib**

Ensure the stability at high speed and reduce the noise



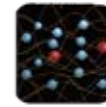
■ **Open groove**

Effective water evacuation, suppress hydroplaning, ensure safety on ice-snow road



■ **3D Sipe**

The high density 3D sipes on the tread pattern ensures the general rigidity of the tread and good performance of grip ability and handling.



■ **Silica tread compound**

The unique silica compound of winter tire enhances the softness and anti-wear performance, ensures good handling and brake performance.

SIZE	LOAD INDEX	SPEED RANGE	APPROVED RIM	STANDARD RIM	SECTION WIDTH mm	OD mm	MAX. LOAD		MAX. PRESSURE		TREAD DEPTH mm
							Kg	LBS	Kpa	P.S.I	
235/60R16	100	H	6.5~8.5	7.0	240	688	800	1764	300	44	9.2
235/70R16	106	T	6.0~8.0	7.0	240	736	950	2094	300	44	9.2
245/70R16	107	T	6.5~8.0	7.0	248	750	975	2149	300	44	9.2
255/65R16	109	T	7.0~9.0	7.5	260	738	1030	2271	300	44	9.2
265/70R16	112	T	7.0~9.0	8.0	272	778	1120	2469	300	44	9.6
225/60R17	99	H	6.0~8.0	6.5	228	702	775	1709	300	44	9.2
235/65R17	108 XL	H	6.5~8.5	7.0	240	738	1000	2205	340	49	9.2
215/70R16	100	T	5.5~7.0	6.5	221	708	800	1764	300	44	9.2



Low noise emission and low impact noise and vibration when rolling over obstacles



Excellent handling on ice-snow road



Excellent cornering performance

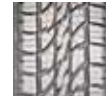


Good traction and grip ability in the cold winter

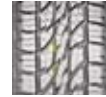
## Pattern Characteristics


**■ 2 Wide Longitude Grooves:**

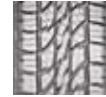
2 Wide Longitude Grooves can easily drain the water, ensure the safety of wet road driving.


**■ Special Sipes Design:**

Simultaneously keep the pattern stiffness and improve the grip force on wet road. Ensure the tire has a high wet rolling safety.


**■ Stereoscopic Design of Corner Cut:**

By using the corner cut, improved the stiffness of tire pattern. It can reduce the exception wear efficaciously.


**■ Special Structure and Compounds Design:**

Special strengthen tread and sidewall can absorb the shock effect from the mixed road surfaces. Special design of tread compounds improve the wear-resisting property, tearing-resisting property and even the operating life of tire.


**■ Wide Pattern Blocks and Reinforcing Ribs:**

For excellent handling and cross-country performance, the pattern blocks are designed big and wide. Reinforcing ribs provide enough stiffness to fit the tire performance.

## ECOLANDER Tire Line

SIZE	LOAD INDEX	SPEED RANGE	APPROVED RIM	STANDARD RIM	SECTION WIDTH mm	OD mm	MAX. LOAD				MAX. PRESSURE		TREAD DEPTH mm
							Single		Double		Kpa	P.S.I	
							Kg	LBS	Kg	LBS			
215/70R16	99	-	T	5.5~7.0	6.5	221	775	1709	-	-	300	44	9.6
225/70R16	101	-	T	6.0~7.5	6.5	228	825	1819	-	-	300	44	9.6
235/70R16	104	-	T	6.0~8.0	7.0	240	900	1984	-	-	300	44	9.6
245/70R16	106	-	T	6.5~8.0	7.0	248	950	2094	-	-	300	44	9.6
255/70R16	109	-	T	6.5~8.5	7.5	260	1030	2271	-	-	300	44	9.6
265/70R16	111	-	T	7.0~9.0	8.0	272	1090	2403	-	-	300	44	9.6
265/65R17	110	-	T	7.5~9.5	8.0	272	1060	2337	-	-	300	44	9.6
265/70R17	113	-	T	7.0~9.0	8.0	272	1150	2535	-	-	300	44	9.6
275/65R17	113	-	T	7.5~9.5	8.0	279	1150	2535	-	-	300	44	9.6
215/75R15LT	106/103	8PR	S	5.5~7.0	6.0	216	950	2095	875	1930	450	65	11.6
215/85R16LT	115/112	10PR	S	5.5~7.0	6.0	216	1215	2680	1120	2470	550	80	11.6
225/75R15LT	108/104	8PR	S	6.0~7.0	6.0	223	1000	2205	900	1985	450	65	11.6
225/75R16LT	115/112	10PR	S	6.0~7.0	6.0	223	1215	2680	1120	2470	550	80	11.6
235/75R15LT	110/107	8PR	S	6.0~7.0	6.5	235	1060	2335	975	2150	450	65	11.6
235/85R16LT	120/116	10PR	S	6.0~7.5	6.5	235	1380	3042	1260	2778	550	80	11.6
245/75R16LT	120/116	10PR	S	6.5~8.0	7.0	248	1380	3042	1260	2778	550	80	11.6
245/75R17LT	121/118	10PR	S	6.5~7.5	7.0	248	1450	3195	1320	2910	550	80	11.6
265/70R16LT	121/118	10PR	R	7.0~8.5	8.0	272	1450	3195	1320	2910	550	80	11.6
265/75R16LT	123/120	10PR	S	7.0~8.0	7.5	267	1550	3415	1400	3085	550	80	11.6
265/70R17LT	121/118	10PR	S	7.0~8.5	8.0	272	1450	3195	1320	2910	550	80	11.6
275/65R18LT	123/120	10PR	S	7.5~9.0	8.0	279	1550	3415	1400	3085	550	80	11.6
285/75R16LT	126/123	10PR	R	7.5~9.0	8.0	286	1700	3750	1550	3415	550	80	11.6
285/70R17LT	121/118	10PR	S	7.5~9.0	8.5	292	1450	3195	1320	2910	550	80	11.6
315/70R17LT	121/118	10PR	R	8.0~11.0	9.5	323	1450	3195	1320	2910	450	65	11.6
31~10.50R15LT	109	6PR	S	7.0~9.0	8.5	268	1030	2270	-	-	350	50	11.6



Cross-Country Performance  
Fit the highway, sand-rock road and mire road.



High Performance  
Excellent wear-resistant performance and handling performance



Symmetry Pattern  
High speed rolling performance



All Season Tire  
Provide enough breaking force and grip force in all season.